



~~~~~ Sandia Nordic Ski Club 2018 Annual Newsletter ~~~~~

A Note from The President

Greetings members and friends of Sandia Nordic!

I can't believe we are getting ready for our second full season as an established Club! Sandia Nordic would not be possible without your involvement and I wanted to take a minute to thank everyone for their support. Although we had a disappointing year in terms of snowfall last year, we certainly made tremendous strides with respect to formalizing and legitimizing Sandia Nordic. To highlight just a few of our accomplishments:

- We were formally incorporated as a 501c(3) public charity on April, 17, 2017!
- We filed a Special Use Permit Application with USFS on June 5, 2017, requesting permission to improve and expand the existing network of groomed cross-country ski trails located between the Ellis and 10K parking areas
- We developed a logo for our Club and created marketing materials to help inform the public of our mission and recruit new members
- We established our presence on the internet, including our website (SandiaNordic.org), and our social media accounts ([Facebook](#), Instagram and Twitter ([@SandiaNordic](#)))
- We were highlighted in 2 articles published in the Albuquerque Journal
- We opened a bank account and raised \$27,115 as of October 15, 2018, a tremendous accomplishment in our initial year as a formal Club!!
- We purchased new grooming equipment, including new Yamaha Grizzly ATV with snow tracks and a new state of the art 84-inch YTS Ginzu Groomer!!!

None of these accomplishments would have been possible without your support and your belief in what Sandia Nordic is working to accomplish, namely advancing the sport of cross-country skiing – including classic and skate techniques – in the greater Albuquerque area and improving the quality of the groomed cross-country trails at the top of the Sandias.

The good news for this year is that most long-range forecasts are predicting a higher than average amount of snowfall! As we move forward into our second season, I am confident that more and more people in our local cross-country skiing community will come to appreciate the quality and appeal of our groomed trails and that our membership will continue to flourish.

Thank you again for your support!

Scott Dietrich

Major Upgrade of Grooming Equipment



Prior to the formalization of Sandia Nordic in 2017, the groomed cross-country trails at the top of the Sandias were maintained through a collaborative relationship between the University of New Mexico Nordic Ski Team and a handful of passionate local volunteers. The trails were groomed using an old Ski-Doo snowmobile and a rudimentary “grooming attachment” which had a previous life as a gravel screen in a local quarry. The snowmobile would often overheat and break down during grooming.

Thanks to your generous support of Sandia Nordic, the Club was able to purchase a new 700cc Yamaha Grizzly ATV with snow tracks (above) and a new 84-inch Yellowstone Track Systems Ginzu grooming attachment (right). We affectionately refer to our Grizzly as “The Beast” for good reason! Our Beast and Ginzu will enable our certified groomers to groom the trails more consistently, breaking through the crust and leaving a smooth corduroy track behind. The quality of the groomed surface will undoubtedly be greatly improved over the old rock screen grooming attachment. The Ginzu will also allow for a much more enjoyable skiing experience during extended periods where there has been a lack of snow and multiple freeze-thaw cycles.



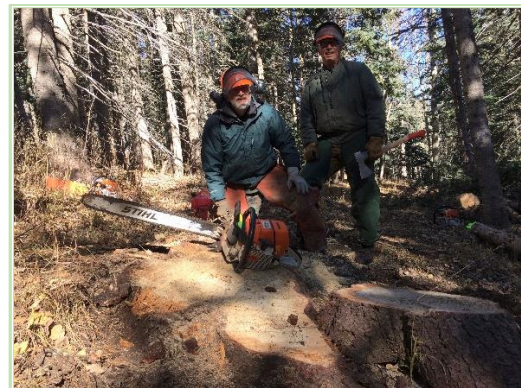
Special Use Permit Application Filed with USFS

On June 5, 2017 Sandia Nordic filed a Special Use Permit Application with USFS, formally requesting permission to improve the quality of the groomed trails and add additional trails to the network. Specifically, the Club has requested permission to widen and level the trails where needed, and to add approximately 2

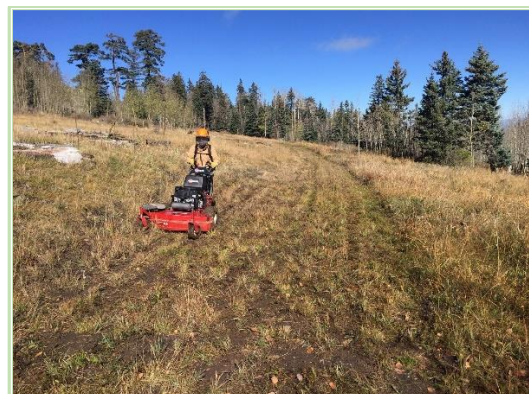
additional miles to the existing network. The current system of groomed trails measures approximately 2.5 miles in length (including the Service Road that runs from the Sandia Peak Ski Area Upper Tram Terminal to the Ellis Parking lot). Meetings with USFS are ongoing and trail work is tentatively scheduled for the summer of 2020. Please note that Sandia District Ranger Crystal Powell will be attending our December meeting to provide an update on where things stand with our Special Use Permit Application.

Fundamental Trail Improvements Are Ongoing...

Sandia Nordic has established an excellent working relationship with the staff at the Sandia Ranger District, and has been given permission to make fundamental improvements to our trails while we wait for the Special Use Permit Application to be finalized. These improvements include moving deadfall to the low side of canted trails, removing problematic stumps and rocks, and mowing the meadows that our trails traverse. We have several members of Sandia Nordic who are also members of the Friends of the Sandia Mountains, aka FOSM. As the staff at the Sandia Ranger Station like to say, FOSM is awesome, and indeed they are. Ever wonder who cuts the fallen trees off of the hiking and skiing trails? FOSM. Who paints and reroofs the picnic area pavilions and restrooms? FOSM. Who fires up chainsaws to low cut tree stumps that impede our grooming equipment? FOSM. We are fortunate to have such a wonderful group of volunteers help us with our trails. Additionally, we have had very strong participation this fall from our own members with regard to trail maintenance. Sandia Nordic sent out a request for help with the trails on 5 dates this fall; so far, we are on track to have over 25 members and friends of the Club help with the trails.



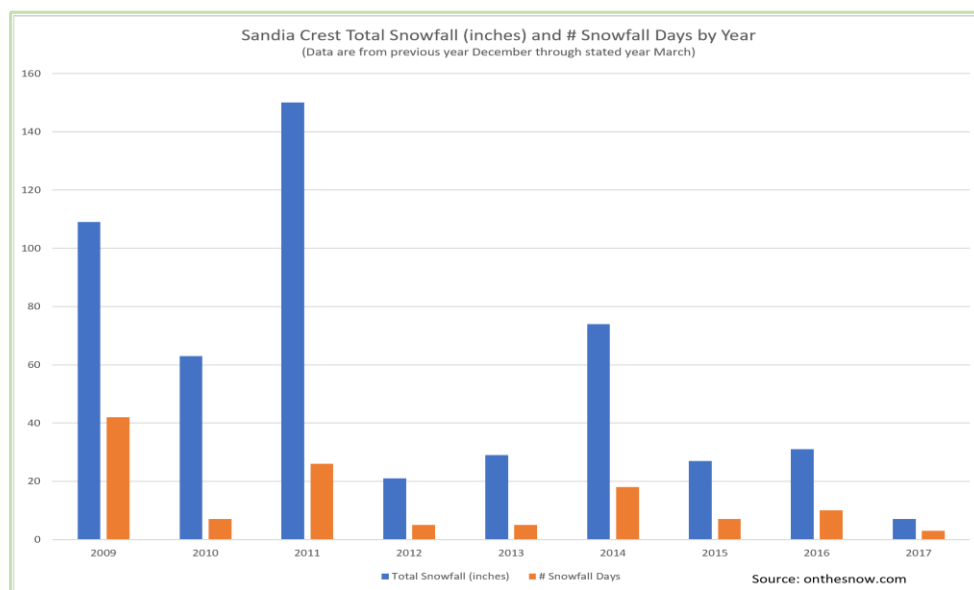
Members of FOSM low cutting and removing tree stumps from the groomed trails.



Sandia Nordic using USFS equipment to mow the meadow trails.

Membership/Engagement Update

As mentioned previously, last year, which was Sandia Nordic’s first year in existence, presented us with a significant challenge in terms in terms of snow fall. In fact, according to onthesnow.com, last year was the lowest snowfall year reported in the 9-year period from 2009 – 2017 (see chart).



The historically low snowfall last year limited our ability to groom the trails, and, consequently, limited our ability to show the local cross-country skiing community how well our grooming equipment works. This, in turn, arguably limited our potential to recruit members into the Club. Despite this limitation, Sandia Nordic was still able to establish an email list of 84 subscribers. Our Facebook page has 259 followers and 85 people follow us on Instagram. We had a total of 32 paying members, many of whom made substantial donations over and above the individual or family membership fees. Assuming that we have average to above average snowfall this season, we should be able to recruit substantially more members as a result of more frequent grooming. Please help spread the word!

Income and Expense Statement

The Income and Expense Statement, which details income and expenses from the formation of the Club in 2017 through October 15, 2018 is shown in Attachment 1. Total income for this time period was \$27,115 and total expenses were \$26,414.18, leaving a balance in our Sandia Laboratories FCU account of \$700.82. It is important for everyone to understand the costs of our annual routine operations (i.e., “the cost to keep the lights on?”), which include the following:

Grooming equipment storage container fees	\$2,127.07
Yamaha Grizzly ATV monthly payments (loan will be satisfied November, 2020)	\$1,934.76
Annual insurance premium on Yamaha Grizzly	\$ 569.20
Annual insurance premium for storage container	\$ 875.52
Annual maintenance on Yamaha Grizzly	\$ 354.97
Total	\$5,861.52

While we were extremely fortunate to have substantial financial commitments from numerous individuals during the course of our formative year, the long-term success of Sandia Nordic lies in the commitment of the groomed trail community at large. Simply put, we need your help. Please make sure to go to SandiaNordic.com today to pay the 2018-2019 annual membership fee, and consider donating to the Club over and above the annual fee if you are able. And remember that since Sandia Nordic is a 501(c)3 nonprofit, your donations are 100% tax deductible. Thank you!

2018 – 2019 Meeting Dates

All meetings will take place at:
Domingo Baca Multigenerational Center
7521 Carmel Ave NE
Albuquerque, NM 87113

<u>Date</u>	<u>Agenda (subject to change)</u>
Thursday, November 1, 2018	General business update, discussion on trail lay-out and suggestions for improvements
Thursday, December 6, 2018	General business update, SRD Ranger Crystal Powell will provide an update on where we are with our Special Use Permit Application
Thursday, January 3, 2019	General business update, Ski waxing clinic
Thursday, February 7, 2019	General business update, Additional topic(s) TBD
Thursday, March 7, 2019	General business update, Additional topic(s) TBD

Sandia Nordic Ski Club Board of Directors

Scott Dietrich	President	(505) 350-5233	sandianordic@gmail.com
Jeff Huser	Vice President	(505) 228-9150	jhuser54@comcast.net
Paul Gourley	Treasurer	(505) 821-6579	pgour12508@aol.com
Elizabeth Quinley	Secretary		
Jon Dellios	At Large	(505) 235-7628	jon@sophrosynenm.com
Christian Otto	At Large	(505) 620-7981	ottlieotto@gmail.com
Karl Walczak	At Large		
Amanda (Mandy) Wang	At Large		

Upcoming Events That May Be of Interest to Club Members

October

- 26 Sandia Nordic Trail Maintenance/Work Day
- 28 Sandia Nordic Trail Maintenance/Work Day
- 28 Sandia Nordic Ski Club Dryland Clinic, Copper Ave. Trail Head, 9:00 – 10:30 AM

November

- 3 Sandia Nordic Trail Maintenance/Work Day
- 10 Sandia Nordic Ski Club Dryland Clinic, Location and Time TBD
- 22-25 Thanksgiving Nordic Ski Camp – Crested Butte Nordic
- 25 Alley Loop Races Series #1 – Crested Butte Nordic

December

- 8 Alley Loop Races Series #2, Crested Butte Nordic, Crested Butte, CO
- 8 Sandia Nordic Ski Club Dryland Clinic, Location and Time TBD
- 22 Coke Race #1 – Durango Nordic Ski Club
- 22 Full Moon Howler - Durango Nordic Ski Club
- 29 Skate Clinic - Durango Nordic Ski Club

January

- 5 Pagosa Skiathlon (Southwest Race Series) – Pagosa Nordic
- 5 Alley Loop Race Series #3 (classic) – Crested Butte Nordic
- 5 Snow Mountain Race Classic Race – Snow Mountain Ranch, Winter Park, CO
- 6 Skate Clinic, Durango Nordic Ski Club
- 9 Twilight Nights Ski #1 – Durango Nordic Ski Club
- 12 Ski Picnic, Pagosa Nordic Club
- 13 Alley Loop Race Series #4 (Criterium @ Magic Meadows), Crested Butte Nordic
- 16 Twilight Nights Ski #2, Durango Nordic Ski Club
- 18 Full Moon Howler, Durango Nordic Ski Club
- 18 Moonlight Ski, Pagosa Nordic Club
- 19 Chama Chile Classic (Southwest Race Series)
- 19 Women's Ski Clinic, Durango Ski Club
- 19/20 Pagosa Paw Dogsled Races, Pagosa Nordic Club
- 23 Twilight Nights Ski #3, Durango Nordic Ski Club
- 26 Alley Loop Race Series #5 (Skate), Crested Butte Nordic
- 26 Skate Clinic, Durango Nordic Ski Club
- 26 Ski Clinic, Pagosa Nordic Club
- 27 Pagosa Nordic Fest (BB Gun Biathlon), Pagosa Nordic Club
- 27 02/03 Ski for Light, Snow Mountain Ranch, Winter Park, CO
- 30 Twilight Nights Ski #4, Durango Nordic Ski Club

February

- 2 Snowdoswj Paintball Biathlon, Durango Nordic Ski Club
- 2 Alley Loop, Crested Butte Nordic
- 2 Boulder Nordic Tour, Sun Valley, ID
- 3 National Masters Classic Race (Alley Loop), Crested Butte Nordic

- 9 Butch Cassidy Ski Chase (Southwest Race Series), Telluride, CO
- 10 Owl Creek Chase, Aspen, CO
- 10 Skate Clinic, Durango Nordic Ski Club
- 16 Ft. Lewis Junior National Qualifier, Durango Nordic Ski Club
- 17 Moonlight Ski, Pagosa Nordic Club
- 22-23 American Kortelopet/Birkebeiner, Haward, WI
- 23 Langlauf Ski Race, Durango Nordic Ski Club
- 23 Gothic Mountain Tour, Crested Butte Nordic

March

- 9/10 Snow Mountain Stampede, Snow Mountain Ranch, Winter Park, CO

Attachment 1: Income and Expense Statement

Sandia Nordic Ski Club Income and Expense Statement for 2017-2018 Season as of October 15, 2018

<u>Income</u>	<u>Amount</u>
Membership Fees	\$1,030.00
Donations	\$26,085.00
Total Income	\$27,115.00
<u>Expenses</u>	<u>Amount</u>
Capital Equipment	\$13,316.18
Down payment for Yamaha Grizzly	\$5,000.00
Shovel Mounts for Yamaha Grizzly ATV	\$59.35
Cargo Box Attachment for Yamaha Grizzly	\$213.25
Ginzu groomer purchase	\$5,860.00
Payment for plow attachment and installation/wiring of Ginzu Groomer	\$1,691.36
Ginzu groomer dryland wheel attachment	\$460.00
Ball Hitch for Yamaha Grizzly ATV	\$32.22
Capital Equipment Total	\$13,316.18
Capital Equipment Financing	\$7,488.59
Yamaha Grizzly ATV Loan Origination Fee	\$204.25
Yamaha Grizzly ATV Loan Payment (12-21-2017)	\$329.24
Yamaha Grizzly ATV Loan Payment (1-21-2018)	\$329.24
Yamaha Grizzly ATV Loan Payment (2-21-2018)	\$329.24
Yamaha Grizzly ATV Loan Paydown (2-27-2018)	\$5,000.00
Yamaha Grizzly ATV Loan Payment (3-21-2018)	\$329.24
Yamaha Grizzly ATV Loan Payment (4-21-2018)	\$161.23
Yamaha Grizzly ATV Loan Payment (5-21-2018)	\$161.23
Yamaha Grizzly ATV Loan Payment (6-21-2018)	\$161.23
Yamaha Grizzly ATV Loan Payment (7-21-2018)	\$161.23
Yamaha Grizzly ATV Loan Payment (8-21-2018)	\$161.23
Yamaha Grizzly ATV Loan Payment (9-21-2018)	\$161.23
Capital Equipment Financing Total	\$7,488.59
Capital Equipment Maintenance	\$354.97
Payment for Grizzly annual maintenance and upgraded winch cable	\$354.97
Capital Equipment Maintenance Total	\$354.97
Container Rental	\$1,980.57
Storage container delivery and pick-up fees + 1st month rent	\$585.88
Storage container rental Dec 14 -Jan 12	\$102.13
Storage container rental Jan 13 - Feb 11	\$102.13
Storage container rental Feb 12 -Mar 13	\$102.13
Storage container rental Mar 14 - Apr 12	\$102.13
First payment for onsite storage of grooming equipment (prorated)	\$53.75
Storage container rental + on site storage fee (Apr 13 - June 12)	\$285.74
Storage container rental + on site storage fee Jun 13 - Jul 12	\$161.25
Storage container rental + on site storage fee Jul 13 - Aug 11	\$161.81
Storage container rental + on site storage fee Jul 13 - Aug 11	\$161.81
Storage container rental + on site storage fee Aug 12 - Sept 10	\$161.81
Container Rental Total	\$1,980.57

General Operations		\$469.10
	Gasoline Storage Containers for Yamaha Grizzly	\$130.03
	Locks for storage container that houses grooming equipment	\$131.96
	Plywood to line the Grizzly Storage Container	\$142.61
	Keys made for Yamaha Grizzly and storage container locks (6 ea)	\$64.50
	General Operations Total	\$469.10
Insurance and Liability		\$1,479.72
	Insurance for Yamaha Grizzly ATV	\$583.49
	Liability/theft insurance for storage container and contents	\$875.52
	Insurance for Yamaha Grizzly ATV (rate increase)	\$20.71
	Insurance and Liability Total	\$1,479.72
Marketing		\$223.60
	500 business cards and one 2'x6' banner	\$111.80
	500 business cards and one 2'x6' banner (reorder)	\$111.80
	Marketing Total	\$223.60
Philanthropy		\$950.00
	Donation of 5% of 2017 revenue to UNM Nordic Ski Team	\$950.00
Fees		\$151.45
	Paypal Fees	\$146.45
	Sandia Labs FCU Annual Fee	\$5.00
	Fees Total	\$151.45
Total Expenses		\$26,414.18
Total Income less Total Expenses		\$700.82